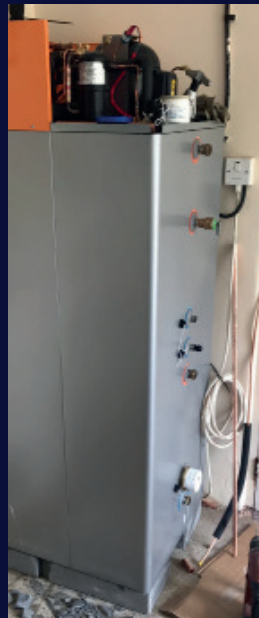


Farm

Setting the scene



As the technology behind our thermodynamic Solar Assisted Heat Pumps is becoming more common, more of our commercial partners are looking at the range as a solution to a range of diverse scenarios. In this instance, a local dairy farm looked to install one of our SAHP 200s to heat the water that is used to clean and sterilize the equipment used with their livestock.

The customer needed a specific amount of water heated at various times throughout the day, after an initial survey the SAHP 200 along with the evaporator panel was installed and is now in daily use.

Contact the team now to find out more about the benefits of our BMTB range and how it can generate up to 100% of your hot water demands day and night, all year.