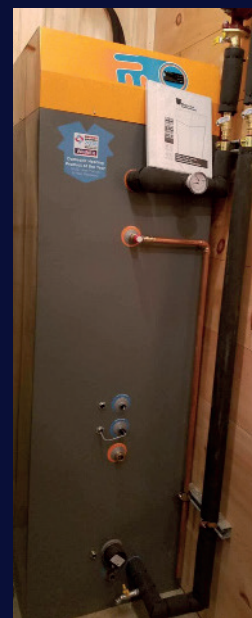


Rockefeller Farm, USA

Setting the scene



Our very first installation in the USA was overseen by our northeast partners.

The team worked with the Rockefeller family to install the SAHP in the farm to efficiently heat within their greenhouse facility.

The SAHP uses a roll bond aluminium evaporator embedded with refrigeration lines to aid the heat exchange process through the integrated heat pump.

Once installed and commissioned the SAHP range operates with an efficiency of up to 375% whilst also reducing the user's carbon footprint, keeping with the mission of sustainable agricultural practices. SAHP are now seeing the use of our SAHP range being used in several agricultural applications worldwide, as a suitable solution to a number of applications.