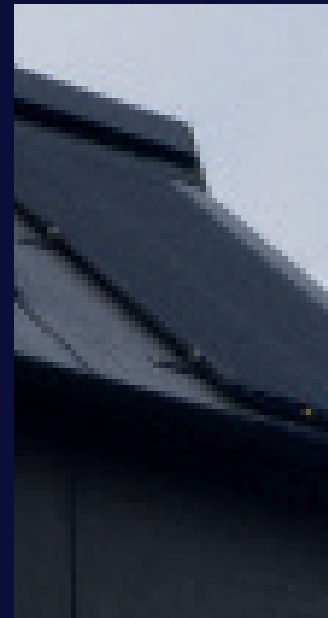
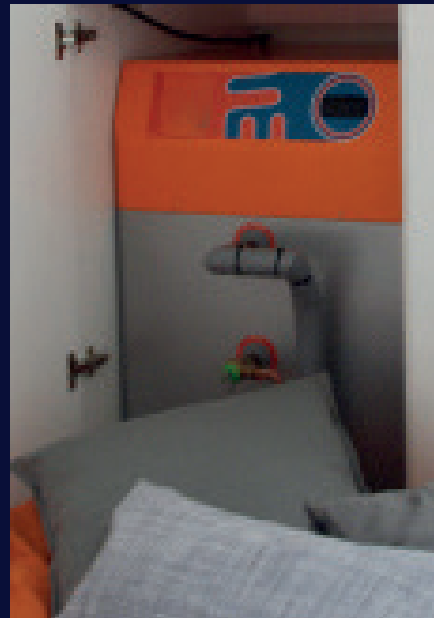


## Modular Home from ZEDpod Setting the scene



These innovative living spaces offer a low cost, prefabricated super energy-efficient micro home that maximises land held by a landowner making it multi-functional. The modular home building Zed Pods in this project designed unique, small footprint, highly insulated homes that sit on stilts above car parks that allow cars to park underneath.

These homes outfitted with solar panels, battery storage and our SAHP 130L have, due to their high insulation levels and compact footprint, lower space heating

requirements. The SAHP in these homes is therefore capable of providing both water heating and space heating and does this via a wet based central system connected to the integral coil of the SAHP, drawing heat out of the cylinder and circulated through the home.

The way our SAHPs have been built means that they are the perfect solution for these compact homes. Running at only 41 dB has allowed Zed Factory to confidently place them directly behind the sleeping area.